



Webbs

Helping people move since 1994

**Windsor Road | Cheslyn Hay, Walsall | WS6 7EN**

**Offers In The Region Of £199,950**

 **Webbs**  
estate agents

## Summary

**\*\* SOUGHT AFTER LOCATION \*\* SPACIOUS TERRACED HOME \*\* WELL PRESENTED \*\* TWO DOUBLE BEDROOMS \*\* BREAKFAST KITCHEN \*\* ENCLOSED REAR GARDEN \*\* EXCELLENT SCHOOLS AND TRANSPORT LINKS \*\* IDEAL FIRST TIME BUYER HOME \*\* EARLY VIEWING ADVISED \*\***

Webbs Estate Agents are pleased to offer for sale a well-presented and spacious home set in the popular location of Cheslyn Hay, offering excellent schools and transport links, and ideal for local amenities.

In brief consisting of an entrance hallway, spacious breakfast kitchen, dining room with opening leading into the lounge.

To the first floor, there are two generous double bedrooms and a modern bathroom. Externally the property has an enclosed rear garden with patio seating area, and parking is on the street.

EARLY VIEWING ADVISED TO AVOID DISAPPOINTMENT

## Key Features

- SOUGHT AFTER LOCATION
- WELL PRESENTED
- EXCELLENT TRANSPORT LINKS
- BREAKFAST KITCHEN
- IDEAL FIRST TIME BUYER HOME
- TWO DOUBLE BEDROOMS
- ENCLOSED REAR GARDEN
- SPACIOUS L SHAPED LOUNGE DINER
- SOUGHT AFTER SCHOOL CATCHMENTS
- EARLY VIEWING ADVISED

## Rooms and Dimensions

### ENTRANCE HALLWAY

### DINING AREA

8'4" x 6'6" (2.545 x 2.004)

### LOUNGE AREA

15'9" x 9'10" (4.802 x 3.002)

### BREAKFAST KITCHEN

15'8" x 7'5" (4.776 x 2.265)

### LANDING

### BEDROOM ONE

15'9" x 8'3" (4.825 x 2.535)

### BEDROOM TWO

11'0" x 10'8" (3.354 x 3.260)

### BATHROOM

7'7" x 4'8" (2.320 x 1.436)

### ENCLOSED REAR GARDEN

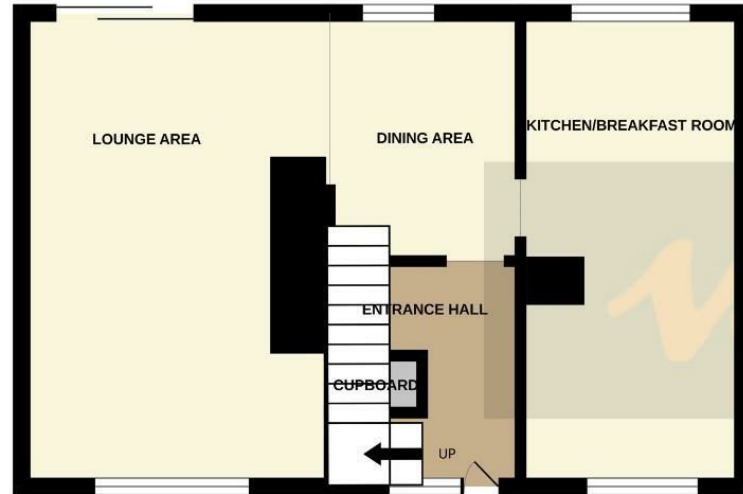
### FRONT GARDEN

### IDENTIFICATION CHECKS - C

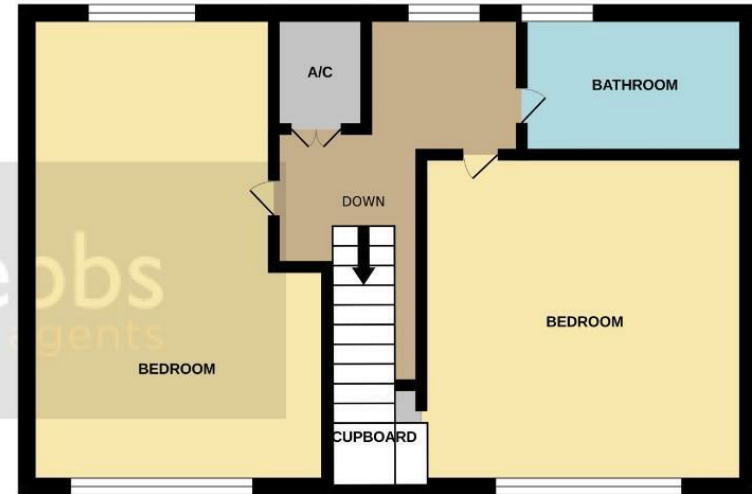




GROUND FLOOR

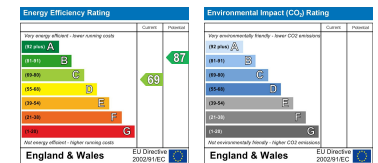


1ST FLOOR



Whilst every attempt has been made to ensure the accuracy of the floorplan contained here, measurements of doors, windows, rooms and any other items are approximate and no responsibility is taken for any error, omission or mis-statement. This plan is for illustrative purposes only and should be used as such by any prospective purchaser. The services, systems and appliances shown have not been tested and no guarantee as to their operability or efficiency can be given.  
Made with Metropix ©2025

Webbs Estate Agents - endeavour to maintain accurate depictions of properties in Virtual Tours, Floor Plans and descriptions, however, these are intended only as a guide and purchasers must satisfy themselves by personal inspection.



153 Avon Road, Cannock, WS11 1LF

Tel: 01543 468846 | Email: [sales@webbestateagents.co.uk](mailto:sales@webbestateagents.co.uk) | [www.webbestateagents.co.uk](http://www.webbestateagents.co.uk)